

⊕ Feature

- Magnetically shielded with stand-off is incorporated to core body.
- Rugged reliability and performance fixed inductor.

⊕ Applications

Excellent as DC-DC converter boost or buck inductors. Also used for filtering applications.

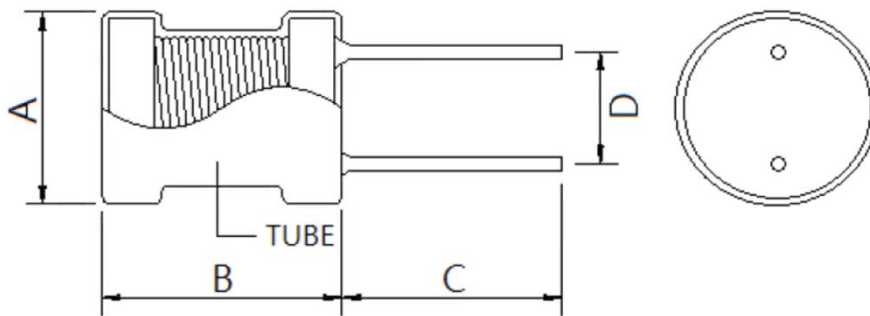
⊕ Product Identification :



Series name	Dimensions(ODxH)		Internal code
DRC	8X10	8*10mm	A
			P1S= 1 set of Wire
			P2S= 2 set of Wire
			S = Standard

Inductance		Tolerance	
1R0	1 μH	J	5%
100	10 μH	K	10%
101	100 μH	M	20%
102	1000 μH	N	30%

⊕ Shapes And Dimensions



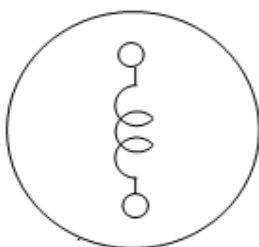
Part No.	Dimensions(mm)				
	A	B	C	D	PIN
DRC8X10P1ES-472K-W15	10.0	13.0	15.0	5.0	0.60
	Max	Min	±2.0	±1.0	±0.1

⊕ Electrical Characteristics :

Part No.	Inductance (mH)	Rated Current (A)	DCR (Ω)	Test Frequency
DRC8X10P1ES-472K-W15	4.7 ± 10%	0.10 Typ	11 Max.	1KHz / 1V

※Test Instrument : L (TH2776) · DCR (TH2511) · IDC (TH2776+TH1773)

⊕ Equivalent Circuit Schematic :



⊕ Material List :

No.	Supplier	Location	Material
1	锐芯	Core	DR2W8X10
2	亿达	Wire	2UEW-0.15*376TS(E344055)
3	YONG SHENG	Pin	CP-0.6mm
4	三联	Tube	UL 9mm,130°C (E209436)
5	GAOXIN	Solder	Sn99.3 Cu0.7

1.Operating temperature -25°C ~ +80°C

2.Storage conditions -25°C ~ +80°C

TEST DATA FOR PREPRODUCTION SAMPLES

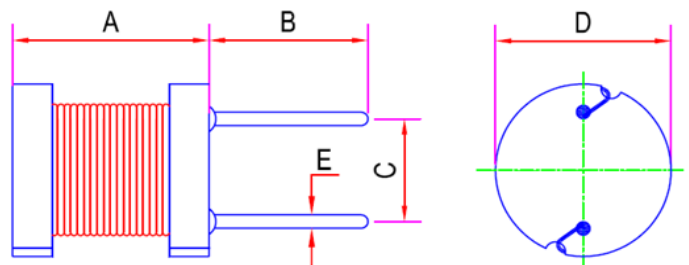
Customer		Test Date	2019-11-7	
RSiM Part No.	DRC8X10P1ES-472K-W15	Sample Quantity	5	PCS
Lot No		Test Temp	25°C	Test Humidity 62%

MEAS Item	L (0A) (mH)	L (0.1A) (mH)	下降率	DCR (Ω)	A (mm)	B (mm)	C (mm)	D (mm)	E (mm)		
SPEC	4.70	L(0A)*-%		11.000						-	-
Upper	5.17	-	-	11.000				-	-	-	-
Lower	4.23	-	-	-				-	-	-	-
Tolerance	10%	Typ	Typ	Max							
Test Freq.	1KHz / 1V									-	-
1	4.70			7.880							
2	4.72			7.920							
3	4.71			8.060							
4	4.72			8.120							
5	4.73			8.060							
6											
7											
8											
9											
10											
Average	4.72			8.008							
Max	4.73	0.00		8.120						0.00	0.00
Min	4.70	0.00		7.880						0.00	0.00
Range	0.03	0.00		0.240						0.00	0.00
StDevP	0.01	#DIV/0!		0.092						#####	#####

Test Instrument

LCR TH2776
DCR TH2511
IDC TH2776 + TH1773

Configuration



Coil Spec : 2UEW-0.15*376TS(E344055)

Drawn by

davy

Checked by

amanda

Approved by

Vincent